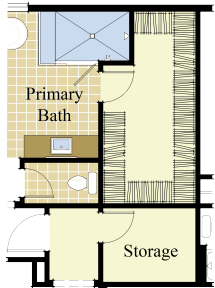




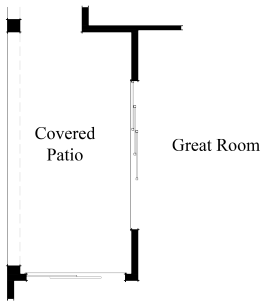
Community: CrestWood at Diamante - La Quinta, CA

Plan: Plan 3- The Tiffany 3,381 sq.ft. | 4 Beds | 3.5 Baths | Parlor

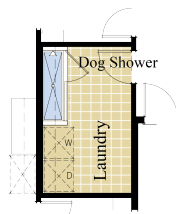
Study | Opt. Casita | Courtyard | Covered Patio | Pool & Spa | 3 Car Garage



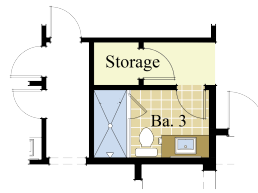
Storage Option
Walk-in Closet



3- Panel Sliding
Door Option at Great Room



Dog Shower Option
at Laundry Room



Casita Option

www.CrestWoodCommunities.com



CrestWood
COMMUNITIES

2023 CrestWood Communities, the floor plan diagrams, renderings, or photographs depicting finishes, designs, materials, plans, specifications, electrical locations, or selected options contained in this brochure are proposed only and CrestWood Communities/Affiliates reserves the right to modify, revise, or withdraw any or all the same in its sole discretion and without prior notice. No exact representation is implied. Dimensions and square footages are approximate and may vary depending on how measured and based upon actual construction. Also, layouts of windows, doors, closets, plumbing fixtures, and structural and architectural design elements may vary from diagram to actual construction. Depictions should be relied upon only as representations, express or implied, of the final details of the home as framing members and other building components may dictate unavoidable adjustments or changes to the placement of individual elements. See sales associate for more details. Equal Housing Opportunity

